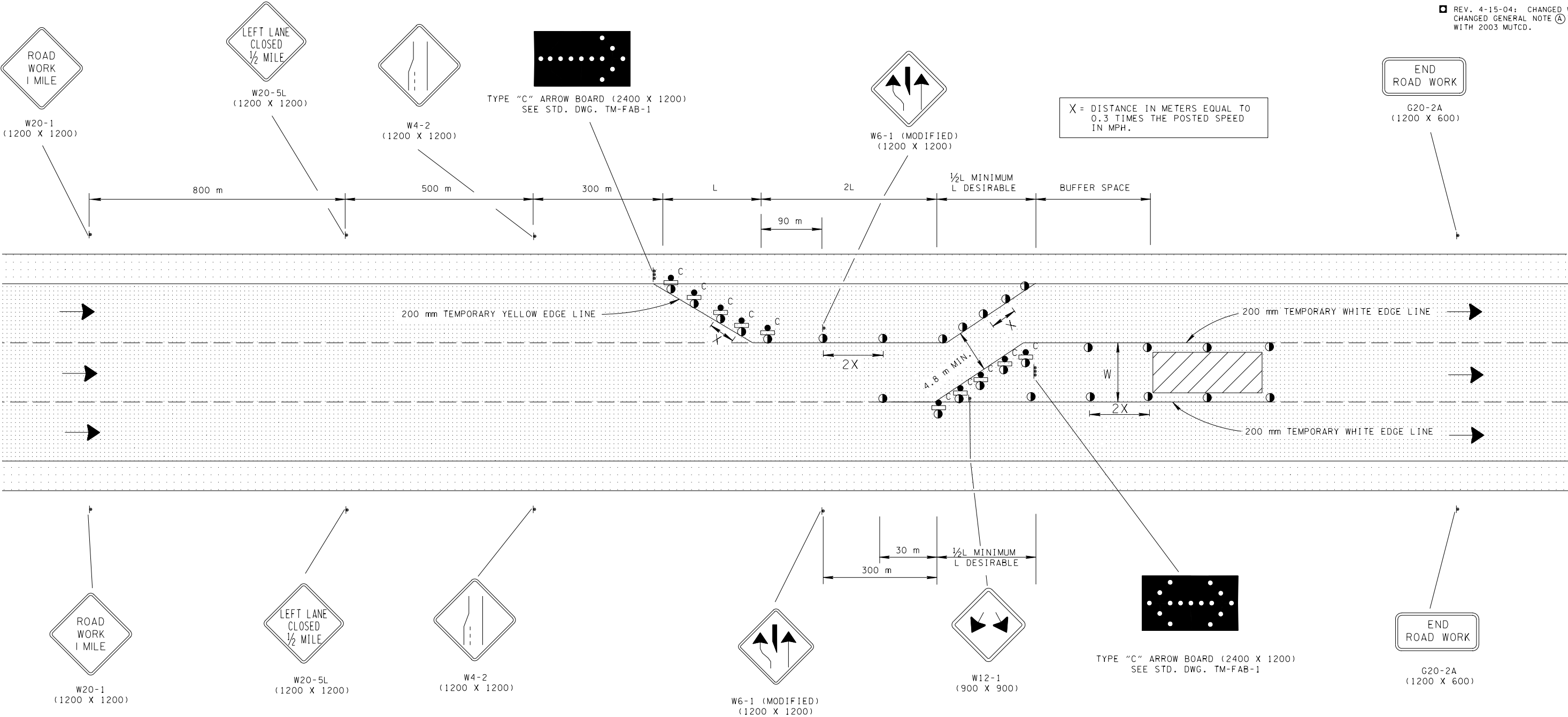


TRAFFIC CONTROL FOR INTERIOR LANE CLOSURE ON FREEWAYS OR EXPRESSWAYS

- REV. 2-28-98: ADDED CHANNELIZATION DEVICE LEGEND. CHANGED LEGEND FOR FLEXIBLE DRUMS. MODIFIED HEADING AND SHEET NAME.
- REV. 5-27-98: CHANGED DRAWING NO. TM-WZ-10 TO TM-WZ-15. ADDED GENERAL NOTES.
- REV. 7-29-98: CHANGED FORMULA FOR COMPUTATION OF L.
- REV. 4-15-04: CHANGED W4-2 SIGN. CHANGED GENERAL NOTE (A) TO COMPLY WITH 2003 MUTCD.



COMPUTATION FOR DISTANCE L

$L = W \times S$

L = TAPER LENGTH IN METERS
W = WIDTH OF OFFSET IN METERS
S = POSTED SPEED IN MPH

GENERAL NOTES

- (A) SEE TABLE 6C-2 OF PART VI OF THE MANUAL ON UNIFORM TRAFFIC CONTROL DEVICES (MUTCD) FOR RECOMMENDED LENGTHS OF BUFFER SPACE WHICH ARE BASED ON STOPPING SIGHT DISTANCE AS A FUNCTION OF SPEED.
- (B) SEE STANDARD DRAWING NO. TM-WZ-10 FOR OTHER NEEDED ADVANCE SIGNING.

CHANNELIZATION DEVICE LEGEND

- FLEXIBLE DRUMS
- ⌋ SIGN SUPPORT
- ⌋ C FLEXIBLE DRUMS WITH TYPE "C" WARNING LIGHTS ATTACHED
- ← DIRECTION OF TRAFFIC
- ▨ WORK SITE
- VERTICAL PANEL (SEE STD. DWG. NO. TM-PBR-2 FOR DETAILS AND SPECIFICATIONS)
- FLASHING YELLOW ARROW BOARD (SEE STD. DWG. NO. TM-FAB-1, FOR DETAILS AND SPECIFICATIONS)



ALL UNITS ARE IN MILLIMETERS UNLESS NOTED OTHERWISE.

MINOR REVISION -- FHWA APPROVAL NOT REQUIRED.

STATE OF TENNESSEE
DEPARTMENT OF TRANSPORTATION

INTERIOR LANE
CLOSURE ON
FREEWAYS
OR EXPRESSWAYS